

# Guisborough Residents Assembly (Guisra)

Inaugural Meeting  
26-Jun-23





# Agenda

## Introduction

## About Guisra

- What We Are
- What We Are Not
- What We Do
- Membership
- Roles

## Website

## Donations and Grants

- Grants
- Donations
- Purpose

## Volunteering


## Questions and Answers

## Close



## Introduction


- Michael Dakin – Founder of Guisra
- New to Guisborough!
- Lived in the Netherlands, Hungary, India and worked all over the world
- Back in the UK now
- My brother said “stand as a councillor”



## About Guisra

### **What We Are**


- A resident's assembly not a resident's association ✓
- Proactive not Reactive ✓
- Jealously democratic ✓
- Pragmatic ✓



## About Guisra

### **What We Are Not**

- Partisan ✘
- Conduit for daily issues ✘
- Set in our ways ✘
- Insular ✘



## About Guisra

### **What we do**

#### Portfolio


Identification of portfolio items by residents are then built on to fully describe the want.

#### Projects

A project can be a single portfolio item or a group of portfolio items. They also define the solution / deliverables.

#### Plans

The big picture - these are overall views of how the town should develop. For example, how we should plan and build houses (if at all) or how we should manage the overall design town. In some cases, the plans will drive portfolio items.



## About Guisra

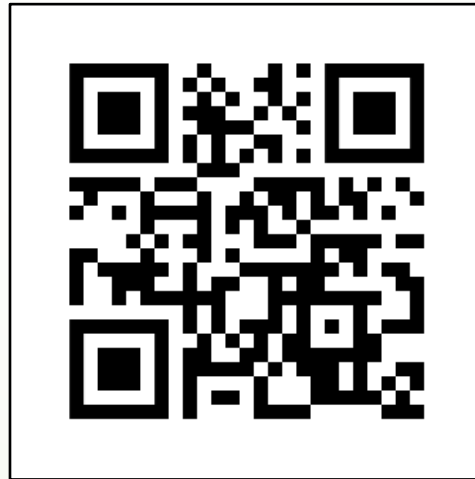
### Membership

- 🎆 **Free** 🎆
- With membership you can:
  - Vote of policies and plans
  - Vote of Project Office members
  - Stand for roles
  - Submit to newsletter
  - Be active with project groups and other activities
  - Submit portfolio items
- With membership you can also:
  - Do nothing!



If you don't have a computer / smart device, then contact me after the meeting and I can help you to register.

<https://guisra.org.uk/register>



We want members of all age groups.



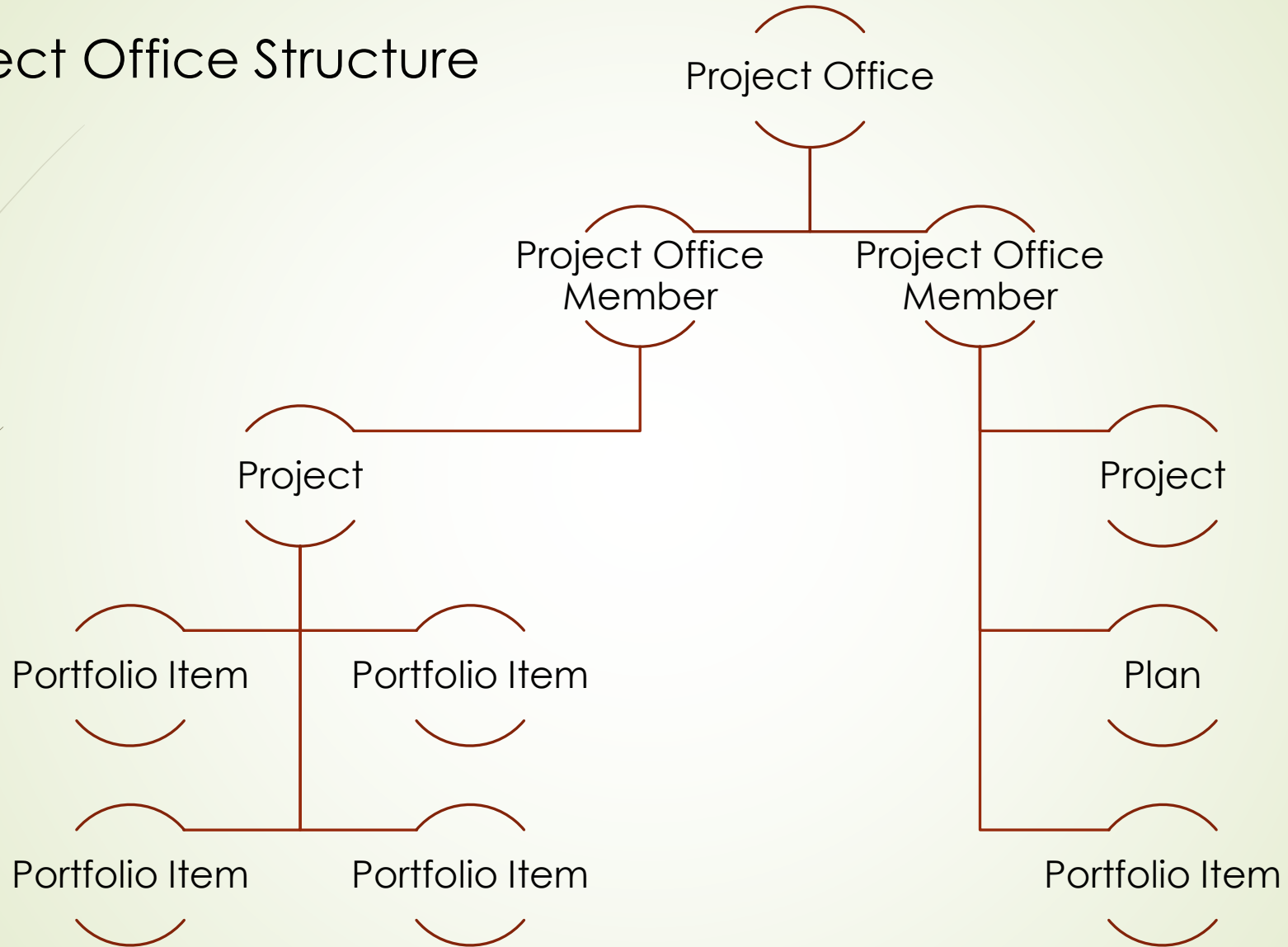


## About Guisra

### **Roles**

- Project Office:
  - Lead on defining projects
    - Projects are made up of multiple elements
  - Project definition can include
    - The how and why
    - Benefits
    - Risks
    - Source of funding – for example grants providing bodies
  - 6 to 8 members to start with

# Project Office Structure






## About Guisra

### **Roles continued**

- Administration:
  - Mostly Volunteers
  - Streams
    - IT
    - Legal
    - Financials
    - Funding
    - Personnel
    - Media
  - Try to get as many involved as possible to share the load



## About Guisra

### **Roles continued**

- General Manager:
  - Facilitate the Project Office
  - Drive Guisra forward
  - Chair meetings as required
  - Organise
- Role comes up for election on the 26<sup>th</sup> June 2024
- If I stand, I am treated as any other candidate
- After the 1<sup>st</sup> election then the new GM is in the role 2 years before an election (members to decide duration)

## Website

- <https://guisra.org.uk>
- About
- Policy
- Newsletter
- Account
- Events



# Donations and Grants

## Grants

- We need somebody to manage grants
- There are grants available if you have a plan
  - <https://www.gov.uk/government/organisations/active-travel-england>
- There are charities and organisations
  - <https://www.createstreets.com/front-page-2/library/resources/>
- But we need a plan!



19 May 2023 — News story  
[Millions of people to benefit from £200 million to improve walking and cycling routes](#)

Funding will ease congestion across cities, transform the school run and provide a boost to high street businesses.



1 June 2023 — News story  
[Active Travel England to be consulted on all large planning applications](#)

As a statutory consultee, Active Travel England will help planning authorities implement good walking, wheeling and cycling infrastructure.



## Donations and Grants

### **Donations and Types**

- Small donations to keep the assembly ticking over
- Individual donations
  - From residents - small and regular if possible
  - Organisations and local businesses - but must understand donations can be ring fenced but will not buy favours
- All donations will be recorded and reported on



## Volunteering

- Project Office Members (POMs)
  - Lead on bringing projects together
  - Work as team and individually
  - Regular meetings
  - GM plays facilitating role
- Administration
  - Roles as shown earlier
- Members can join POM and Admin





## Volunteering

- POMs are facilitators
- No skills needed – we're a team
- Volunteers become part of teams created to deliver projects



Questions and Answers

Q&A Time!





THANK YOU!

